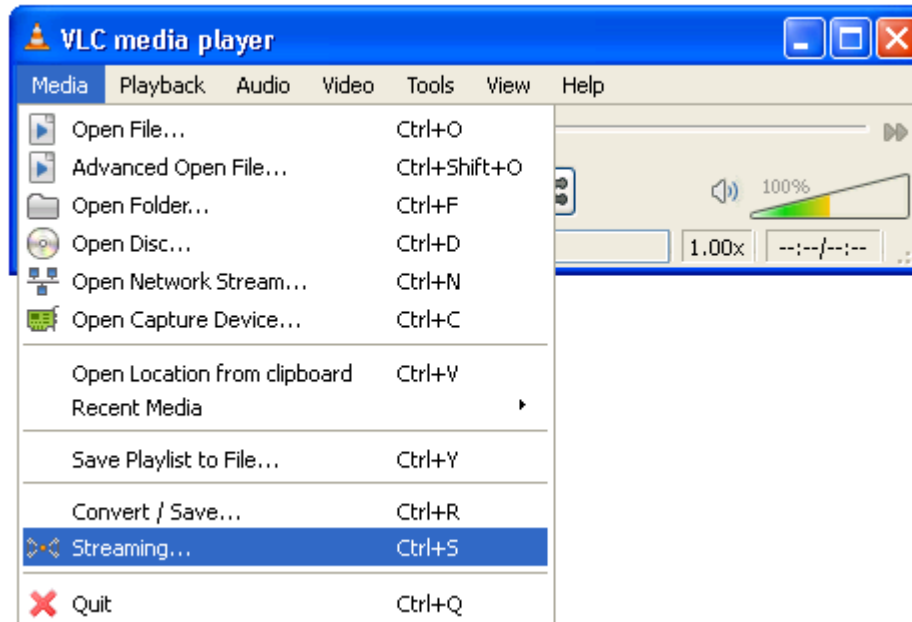


UDP Video Streaming Using VLC (Video LAN Client) player

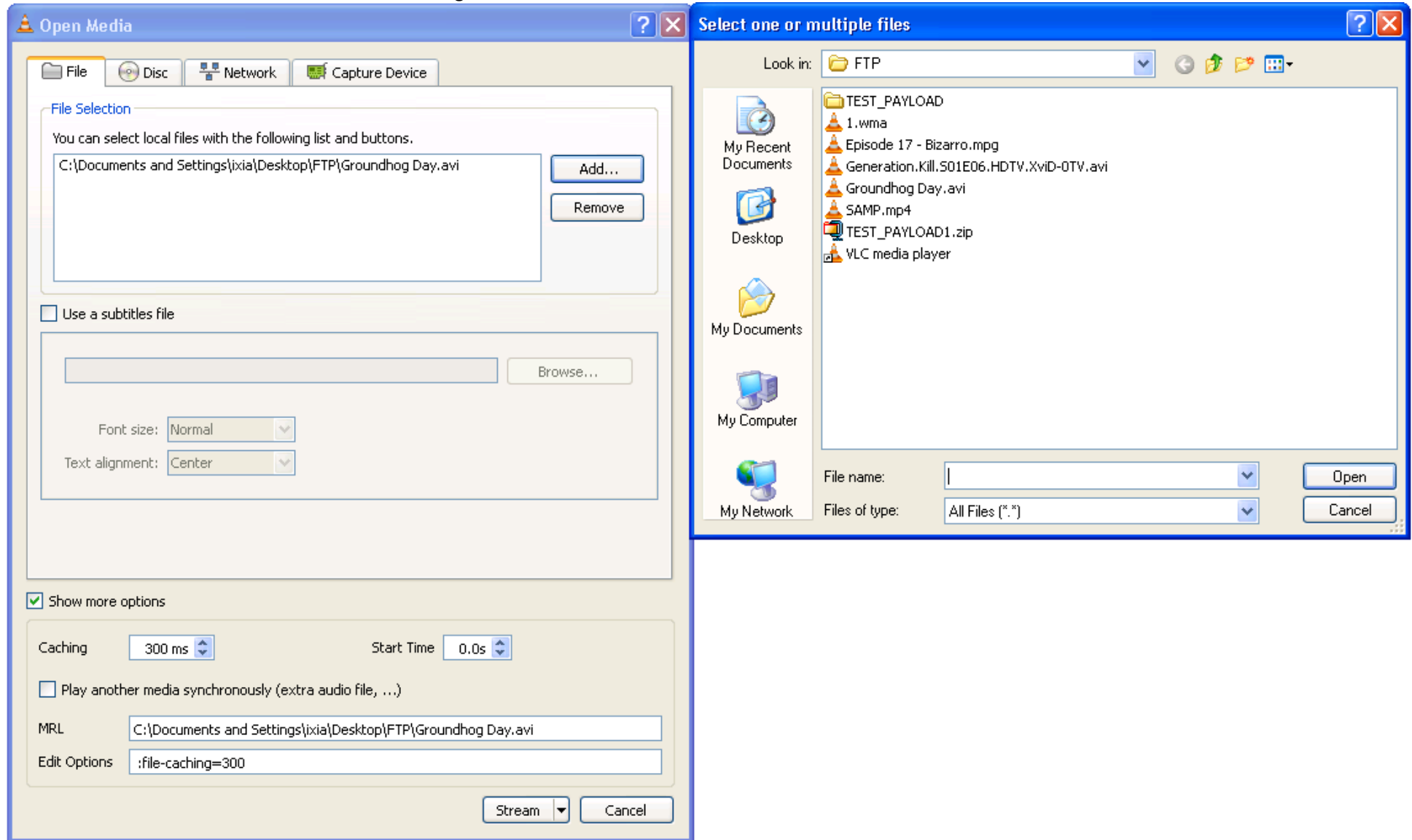
This tutorial shows how to generate Video streaming from one host to another.

@the Transmitting host (Local Host)

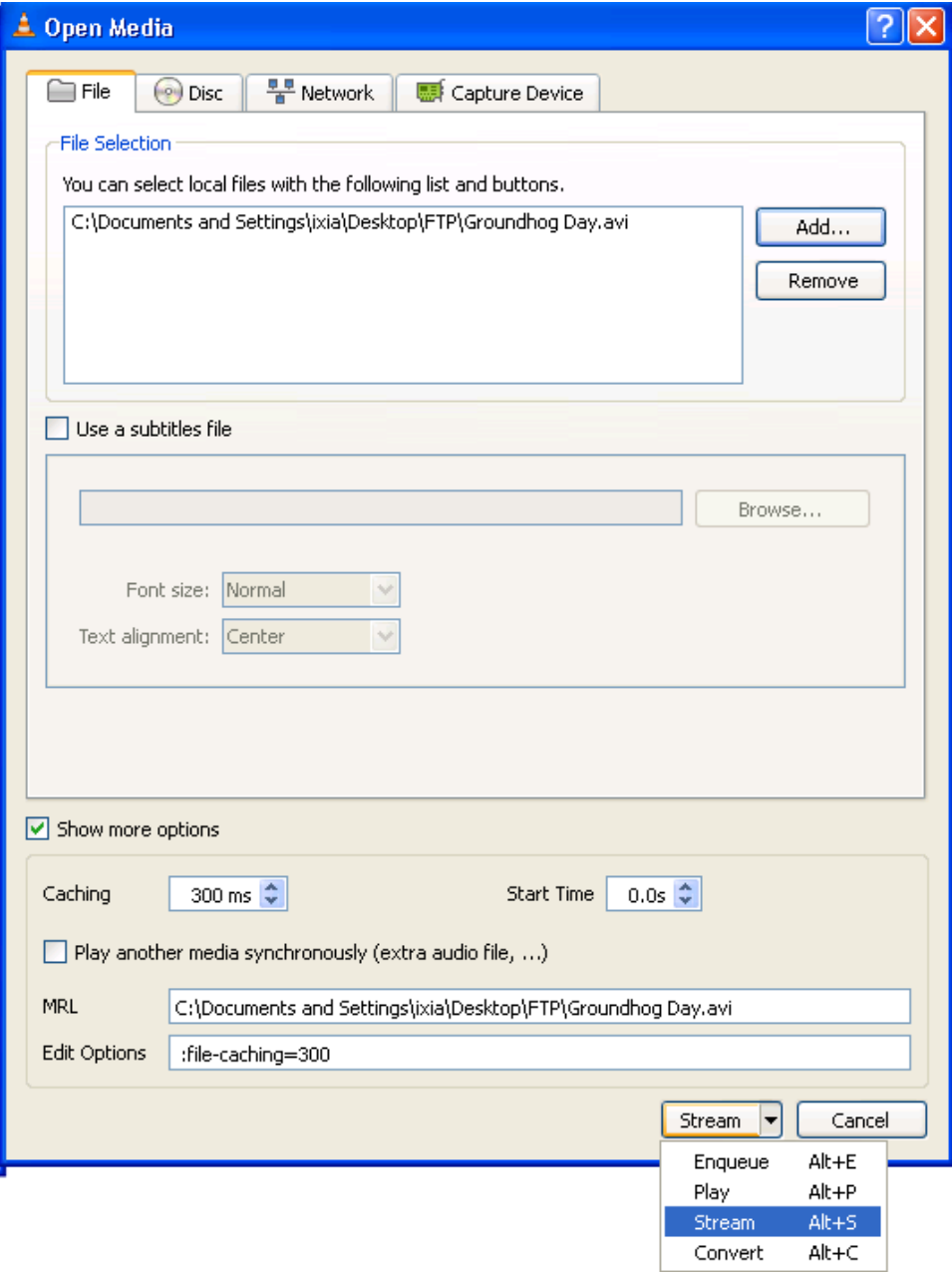
Media>Streaming



Press "Add" and select and add the file for streaming:



Select Stream



On Destinations

Select "Display Locally" if you wish to display the video on the local device.

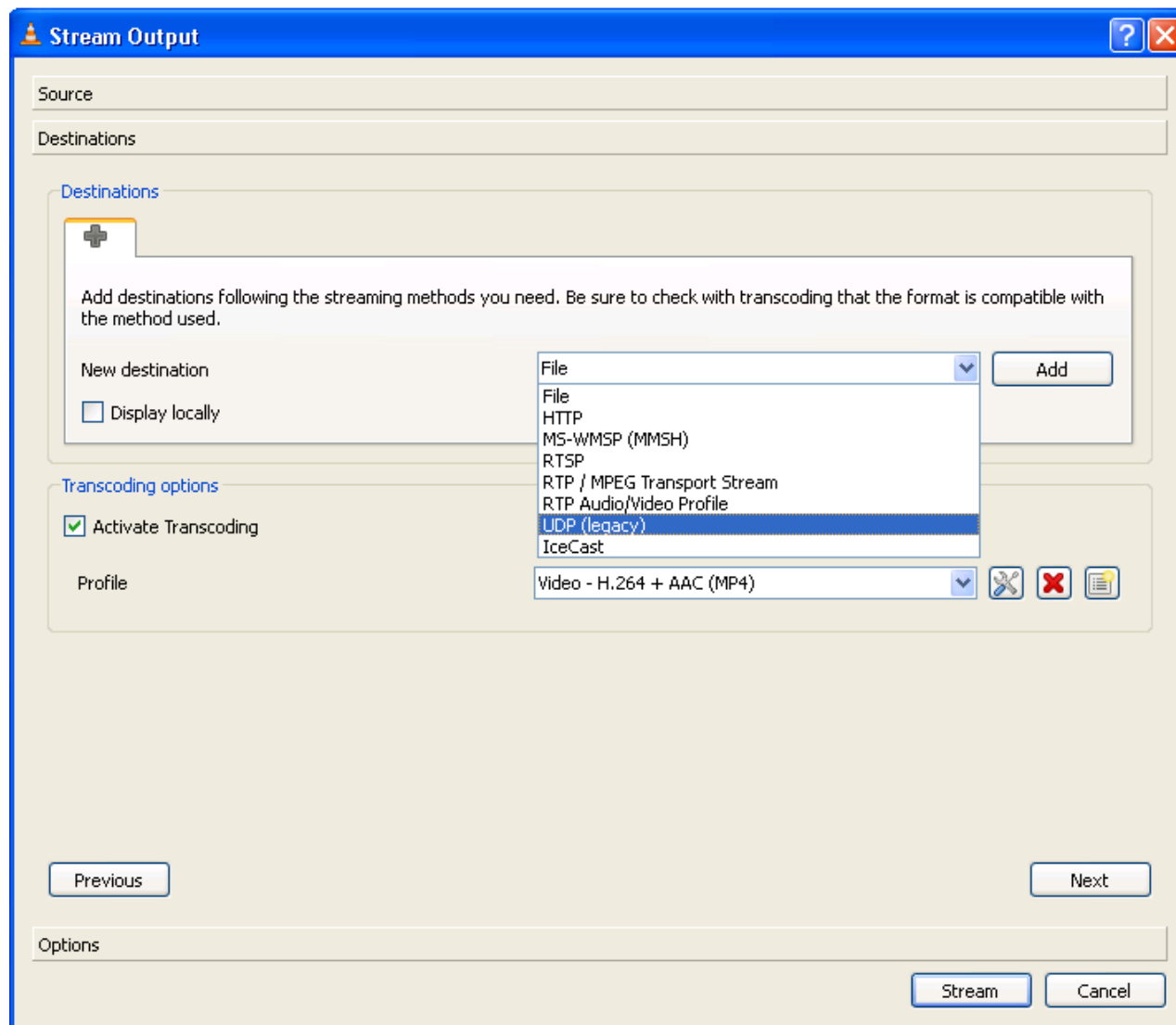
Select the protocol. (I've only had luck with UDP(legacy) upto now).

Press "Add"

On Transcoding

Check "Activate Transcoding".

Select Video Codec



The image shows a "Stream Output" dialog box with a blue title bar and standard window controls. It is divided into several sections:

- Source:** A text input field at the top.
- Destinations:** A section containing a "Destinations" sub-header and a list of destinations. A new destination is being added, with a dropdown menu open showing options: File, HTTP, MS-WMSP (MMSH), RTSP, RTP / MPEG Transport Stream, RTP Audio/Video Profile, **UDP (legacy)** (highlighted), and IceCast. An "Add" button is to the right of the dropdown.
- Transcoding options:** A section with a checked "Activate Transcoding" checkbox and a "Profile" dropdown menu set to "Video - H.264 + AAC (MP4)". There are also icons for settings, delete, and help.
- Navigation:** "Previous" and "Next" buttons at the bottom.
- Options:** A section at the very bottom with "Stream" and "Cancel" buttons.

Set Destination IP
Set Port# (Note: the port number must match on the stream receiving VLC player)

Stream Output

Source

Destinations

Destinations

UDP

This module outputs the transcoded stream to a network via UDP.

Address

192.169.224.250

Port

1234

Transcoding options

☒ Activate Transcoding

Profile

Video - H.264 + AAC (MP4)


Previous

Next

Options

Stream

Cancel

 Stream Output

?

✕

Source

Destinations

Options

Miscellaneous Options

☐ Stream all elementary streams

☐ SAP announce

Group name

Time-To-Live (TTL)

1

Generated stream output string

Previous

Stream

Cancel

@ The Remote Host

(Note: The port# must match that of the Transmitting port number config)

